

## Twin Han 3020C/7045/7046 MAC QIG

TwinHan co work with MMInputfamily for MAC support, for more information, please conact their website.

- System Requirements.



- Driver/Software you need

Please click [Driver](#), [iTele](#), [MPlayer for Mac OS X](#) to download software from Internet

Step1: Please install Driver(MMInputFamily)



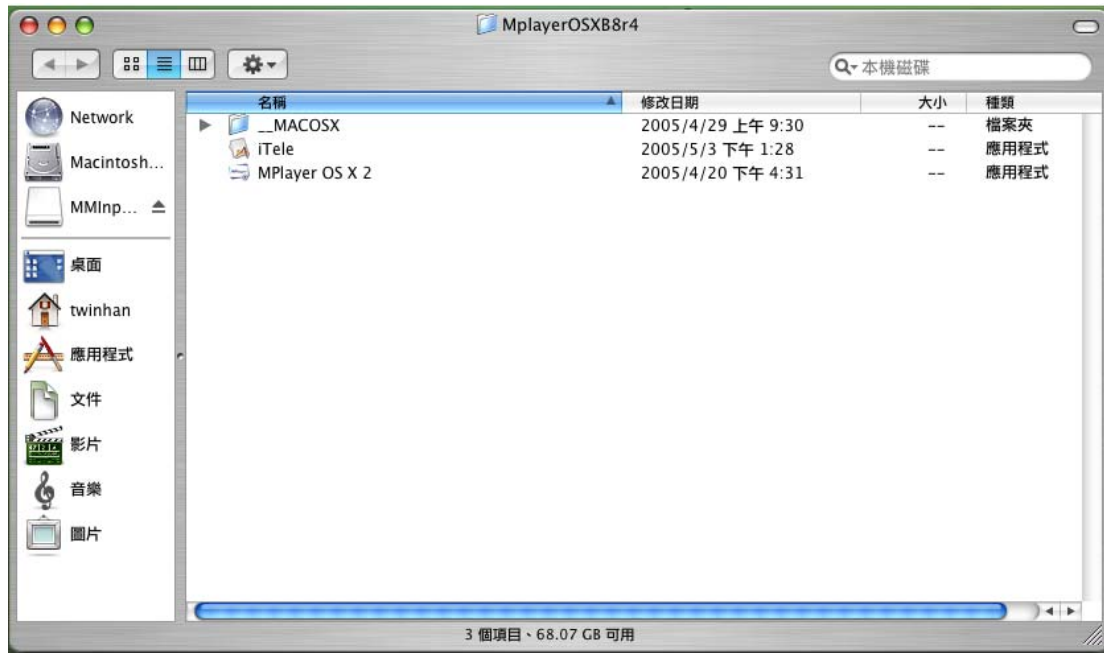
Please click "continue" to install driver, and you will see finish page below



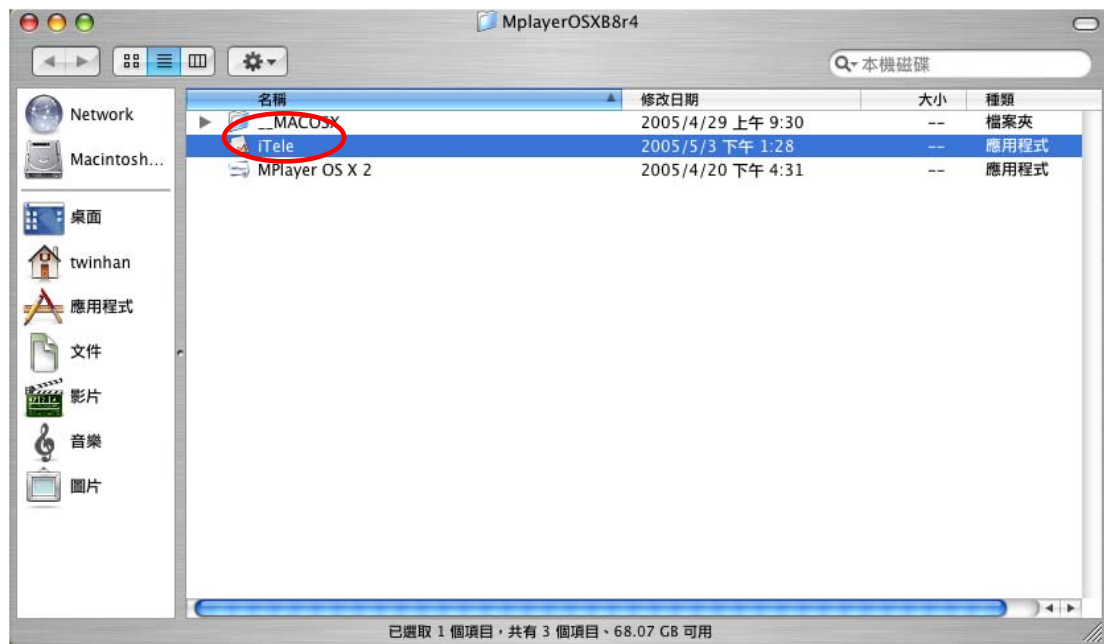
Step2 Please copy iTele file into MplayerOSX folder.



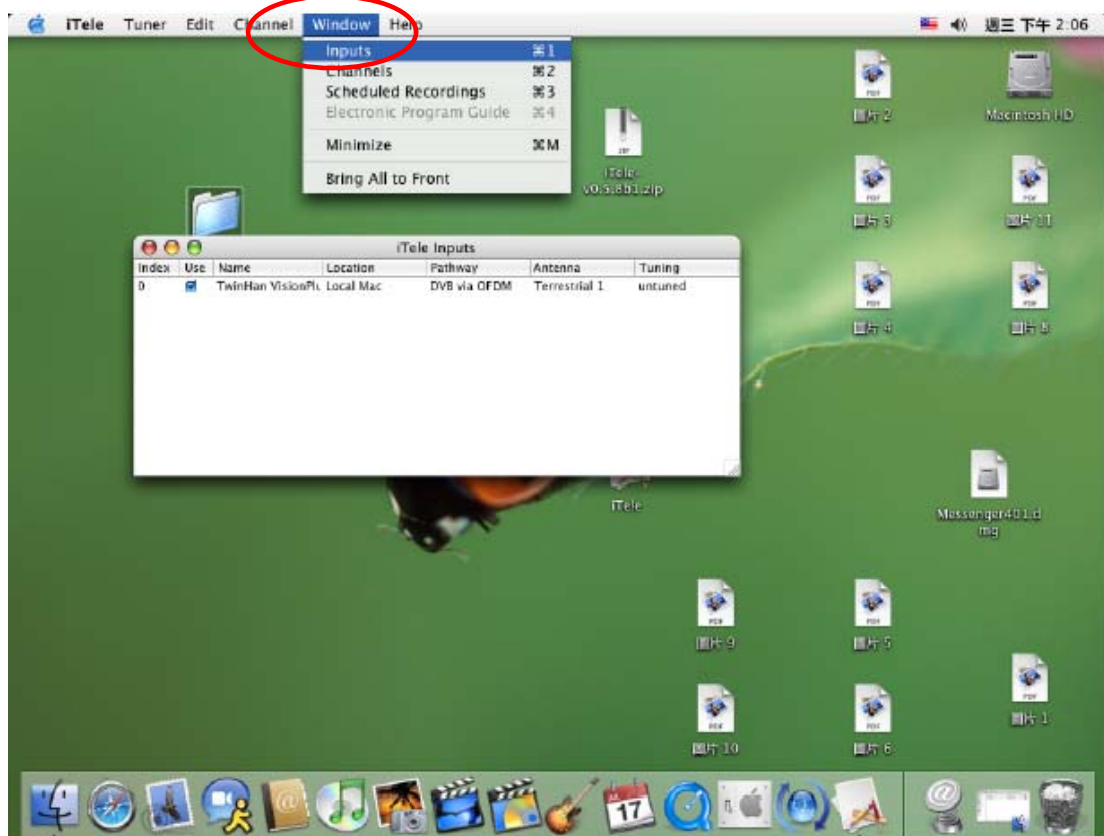
You will iTele is inside the Mplayer folder



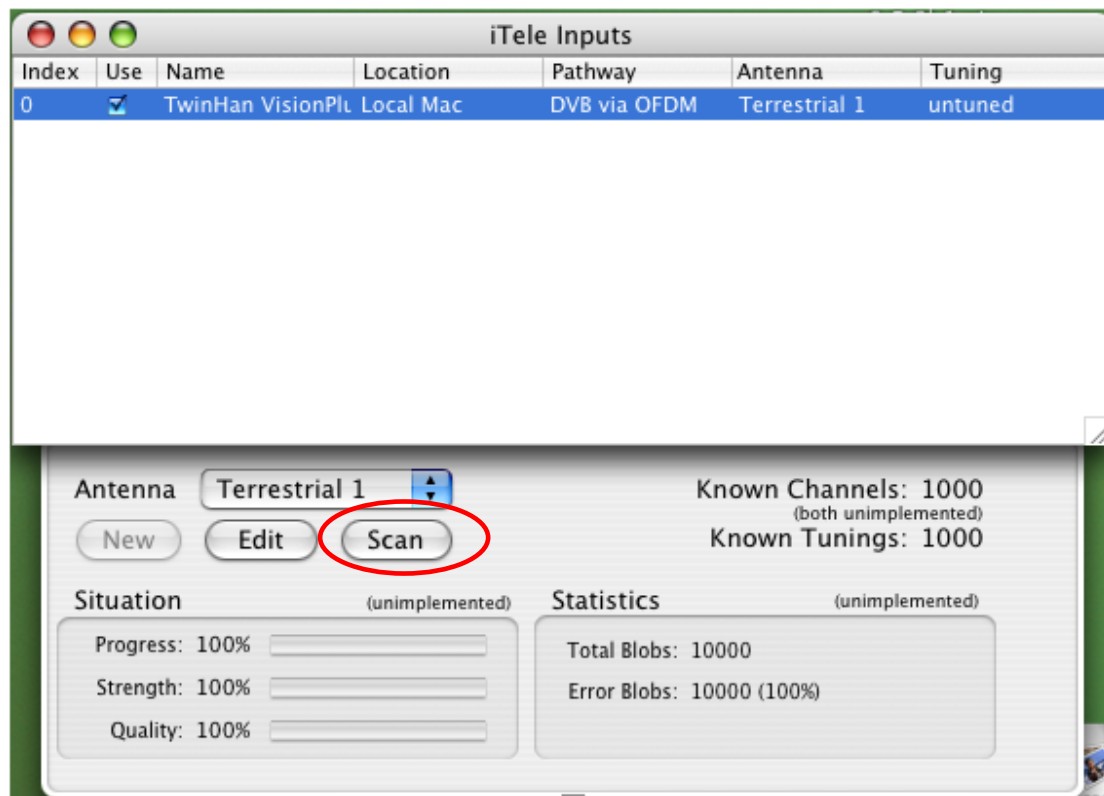
Step3 Double click iTele for setting  
(Please make sure iTele and Mplayer are in same folder)



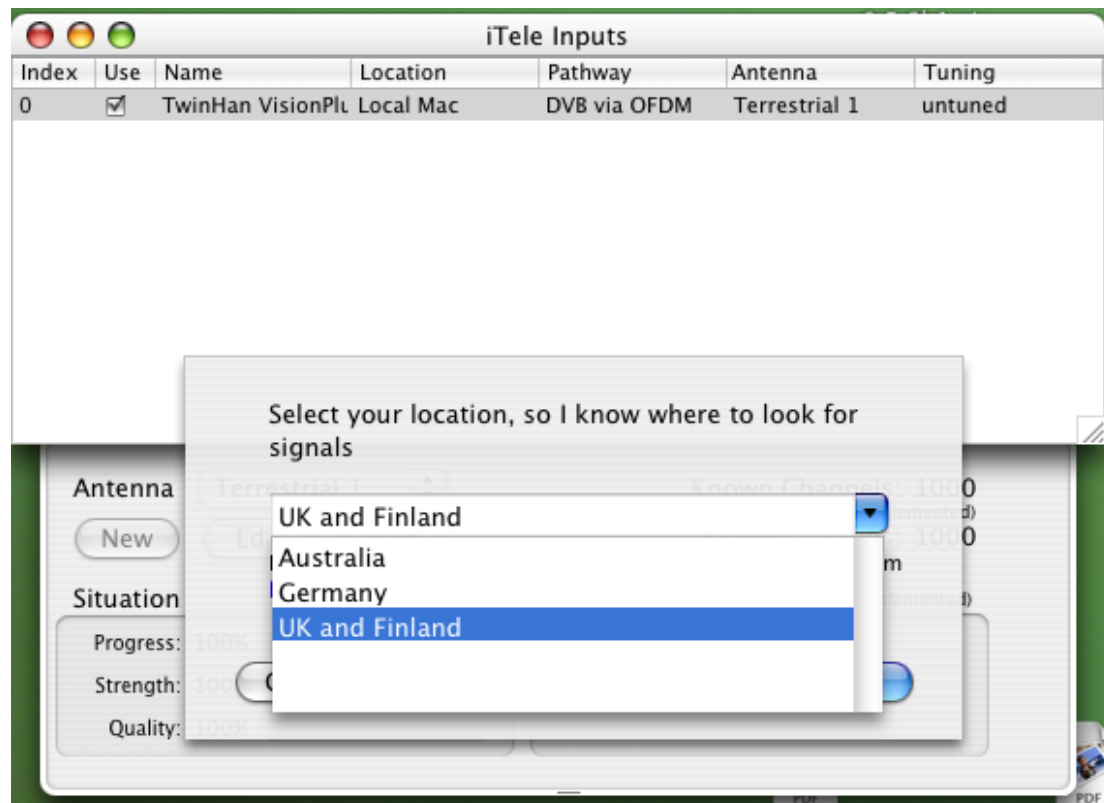
Step3-1 Please selects your device.



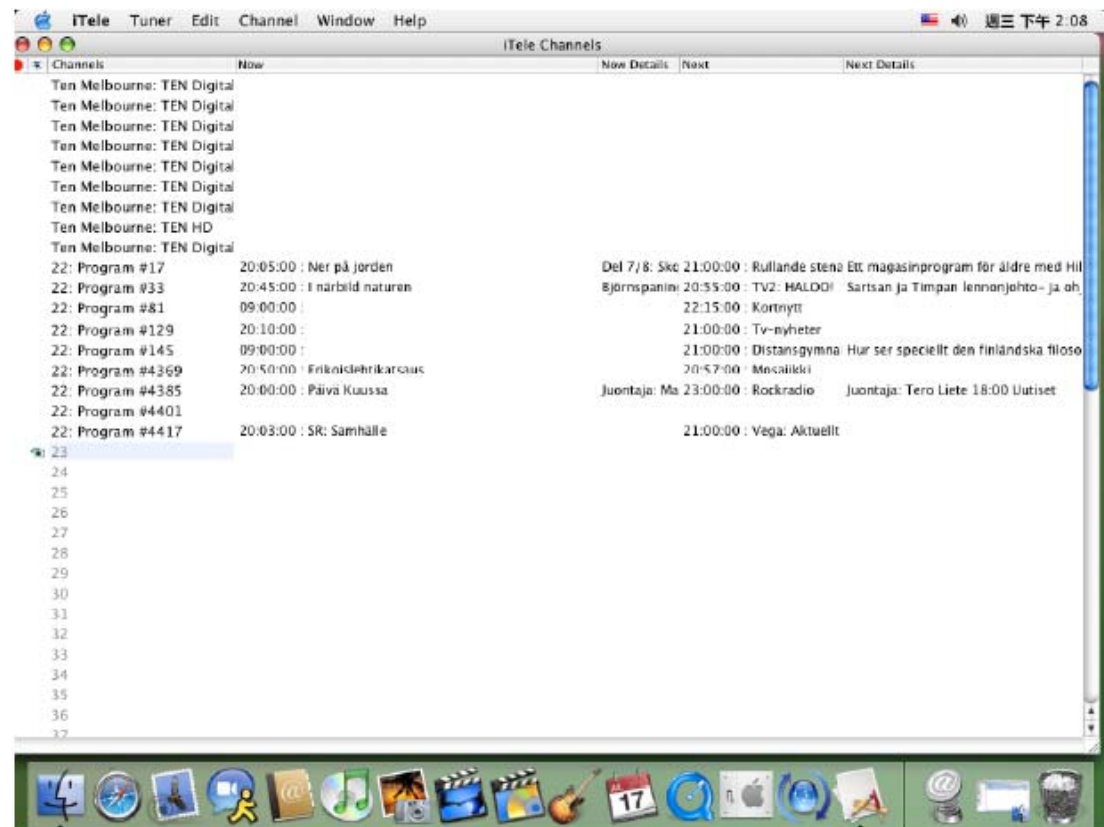
Step3-2 Select device and click "Scan"



### Step3-3 Select your location



### Step3-4 After choosing area and press scan to scan for signals



Step4 After scanning, you can click “watch” to see the TV program

